

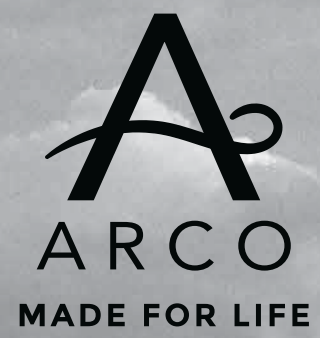
# TEAK BOOK



MADE FOR LIFE







FINE OUTDOOR FURNITURE IN PREMIUM TEAK









# TECTONA GRANDIS

The optimum growth conditions of high quality teak trees are found in subtropical monsoon regions of India, Burma, Thailand and Indonesia. Teak does not grow in rain forests and needs at least two climatic conditions: a wet rainy monsoon followed by a

dry season of 3-5 months without any precipitation. Tectona Grandis is one of the few woods in the world that has a natural oil to repel water and keeps teak from wrapping, cracking or becoming fragile. It is extremely resistant to rot and has

a natural resinous substance called technoquine that repels termites, marine borers and other insects. This makes Teak being the best natural material for outdoor furniture and marine use.



# INTRODUCTION



Dear Readers,

In this Special Book Edition we **present our 11 Collections of fine Outdoor Furniture in Teak.** Our products are Evergreens; that's why we present few, if any, new items each year and continually reinterpret the existing ones with new inspirations and in new environments.

Our theme for today and always **"Made for Life" is reflected and integrated** into each of our products. Design and comfort is made with the greatest care for our environment and is aligned for the wellness-being of our customers. Our Main Call is to create Timeless Outdoor Furniture.

To achieve this aim, Teak in Premium Quality is our main Protagonist, being undoubtedly

The most longlasting natural material on Earth.

Premium Teak withstands the harshest weather conditions, and with the right teak maintenance it will last 100 years and more. Isn't it a main contribution to our environment choosing 1 time for life solid, longlasting, timeless and comfortable Teak Furniture for Your Outdoor Areas, regardless them being for private, hotel or Yachting use.

We offer our products to all those who love and appreciate quality and dedication to Detail.

Michael Düring

A handwritten signature in dark ink, appearing to read 'Michael Düring'.





# TEAK AND ITS SUSTAINABILITY

## THE TEAK

The optimum growth conditions of high quality teak trees are found in subtropical monsoon regions of India, Burma, Thailand and Indonesia. Teak does not grow in rain forests and needs at least two climatic condition

- a wet rainy monsoon followed by a dry season of 3-5 months without any precipitation. Tectona Grandis is one of the few woods in the world that has a natural oil to repel water and keeps teak from wrapping, cracking or becoming

fragile. It is extremely resistant to rot and contains a natural resinous substance called technoquine that repels termites, marine borers and other insects. This makes Teak beeing the best material for outdoor furniture and marine use.

## SUSTAINABILITY

Indonesia has the largest natural forest area in Asia as well as the largest areas worldwide of teak wood plantations. The country is a leading producer of products made in teakwood. To combat illegal logging and related trade the Government of Indonesia has implemented a system to assure international markets that timber and wood products produced in the country comply with Indonesian laws.

The new system is mandatory for all timber producers. It creates a chain of custody process designed to ensure the processing mills only use timber from legal sources, and that all products exported from the country are traceable to verifiable points of origin.

## What is SVLK?

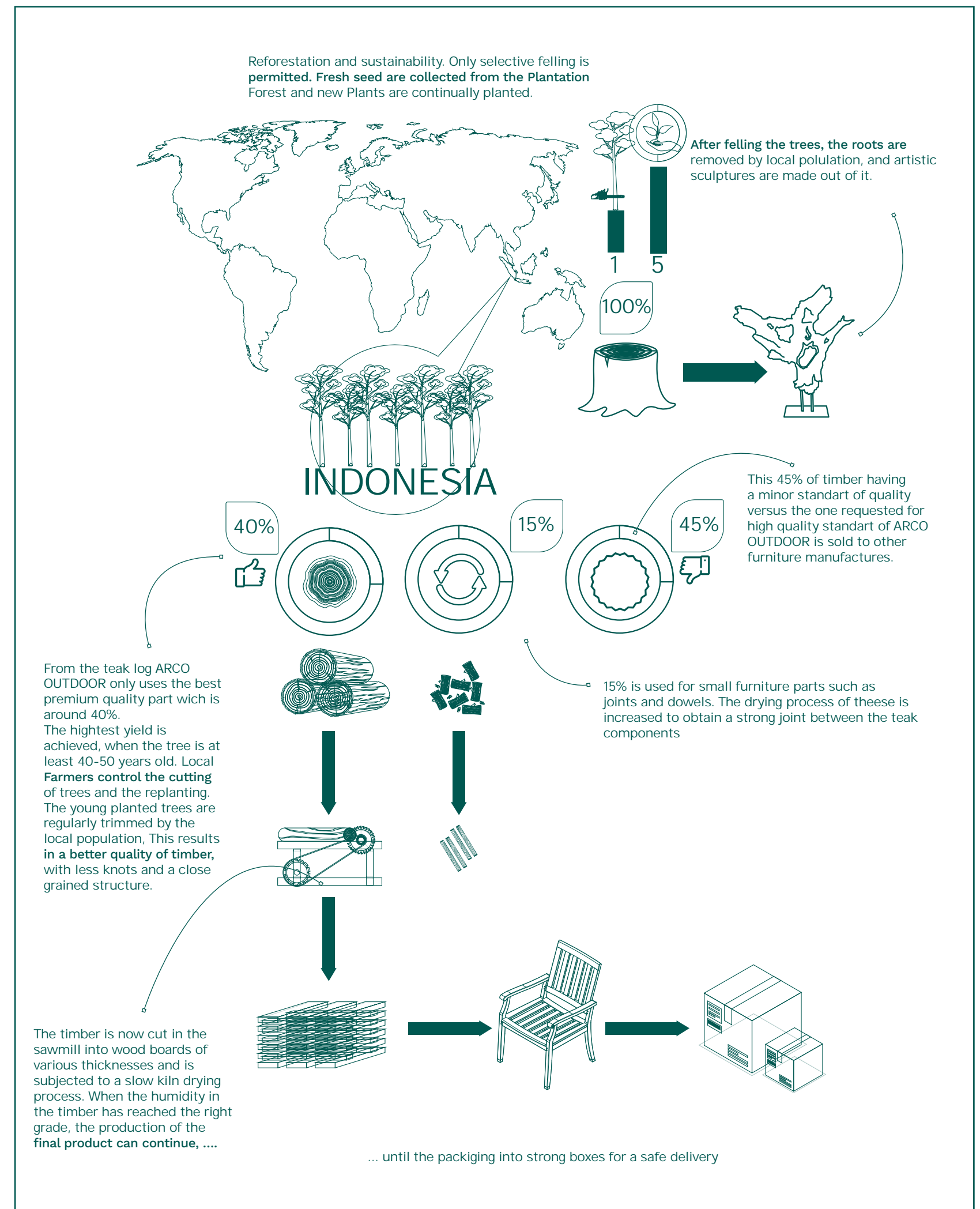
SVLK (Sistem Verifikasi Legalitas Kayu) is the acronym of Indonesia's national timber legality assurance system, which is a mandatory legality and sustainability certification system built on a national multistakeholder consensus.

## Is SVLK enough to prove the legality of the wood?

Yes. Under Indonesian law, SVLK certification and related documents (SVLK certificates and export licences called V-Legal Documents) constitute proof of legality for Indonesian timber products. Until the start of FLEGT licensing, Indonesian products with a V-Legal Document that are exported to the EU will have to go through the normal due diligence process under the EU Timber Regulation (EUTR). Since FLEGT licensing has started,

FLEGT-licensed products will be considered comply with the EUTR requirements. The development of the system is the core component of a Voluntary Partnership Agreement (VPA) between the European Union (EU) and the Government of Indonesia signed by both in 2011 and ratified in March 2014.

The system is embedded in new national regulations and includes the mandatory issuance of "V-Legal" documents for any designated timber product exports. These regulations are frequently updated in response to improvements and changes in the forest law.







# CONTENTS

## INTRODUCTION

001 - 009



## NEW YORK

010 - 017



## ADIRONDACK

018 - 025



## NAUTILUS

026 - 035



## SAHARA

036 - 047



## ENEA

048 - 061



## LUGANO

062 - 101



## HERITAGE

102 - 127



## CAMBRIDGE

128 - 153



## QUADRO

154 - 163



## CUBE

164 - 181



## LUMEN & TULIP

182 - 193



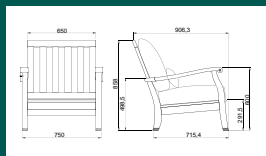
## TEAK MAINTENANCE

194 - 201



## PRODUCTS & MEASURES

202 - 212



## FINISHING & FABRICS

213 - 217



## THE ARCHITECT

218 - 221





# NEW YORK

Collection







## NEW YORK Collection

This collection made of 3 products is a modern interpretation of our existing evergreen Adirondack.

The inclination between backrest and the seat height donate to this new pairing lounge chair an excellent comfort also without cushions.

The generous thicknesses and teak selection used in this collection make these outdoor products indestructible.









REF. 900  
New York Lounge Armchair in Teak  
W 79 H 96 AH 57 SH 36



REF. 901  
New York Footstool in Teak  
D 54 W 57 H 34/26



REF. 902  
New York Side Table in Teak  
45 x 45 x H 46



REF. 900 + 901  
New York Lounge Armchair with Footstool in Teak



ADIRONDACK  
COLLECTION







REF. 700

REF. 701

## ADIRONDACK Collection

Adirondack, the comfortable one as well without cushions.

A re-take on an American classic.

The Adirondack collection brings refinement in the form of hidden stainless steel hardware and improved ergonomics that elevate the comfort of a 100 year old iconic design to be on par with the comfort of modern lounge chairs.







REF 700  
Adirondack Chair, in solid Teak  
74 x 91 x h seat chair 35 cm



REF 701  
Adirondack Footstool, in solid Teak  
58 x 56 x h 32 cm



REF 702  
Adirondack Side Table, in solid Teak  
45 x 45 x h 46 cm

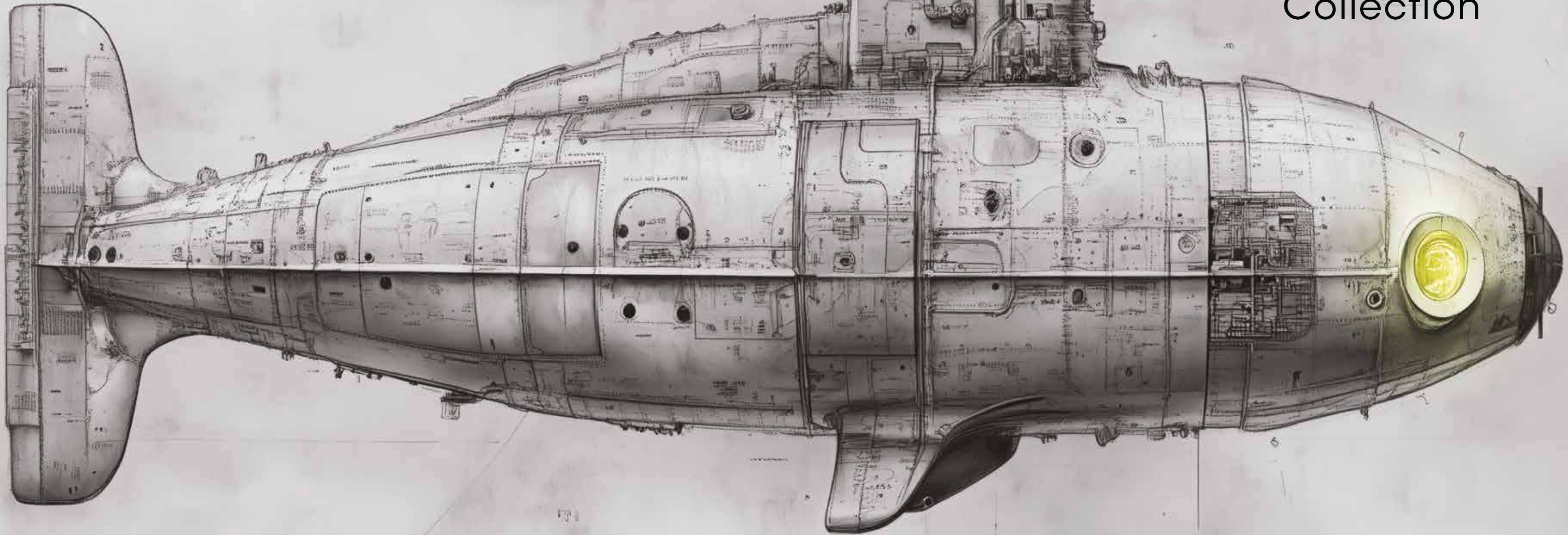


REF. 700 + 701  
Adirondack Chair & Footstool





*Nautilus*  
Collection







# Nautilus Collection

Nautilus is our very comfortable directory chair, ideal for small areas and dining areas.

Before designing it, we found that most of the other existing directory chairs were uncomfortable because of the straight back they have. So we gave to our chair both, the right radius and a good folding mechanism, wich characterizes our Nautilus folding directories armchair.

Seat & back come in a padded version for a major seating & backrest comfort. We offer 3 traditional colours and 2 fashion colours.















REF 885  
Nautilus Folding Directory Chair with Arms in Teak



VIDEO

REF. 885  
Nautilus Folding Directory Chair With Arms in Teak



VIDEO

REF 810  
Nautilus Folding Square Bistrot Table in Teak  
with Patent pending on Flip Mechanism  
80 x 80 x H 75 cm



REF 811  
Nautilus Folding Round Bristot Table in Teak  
ø 90 x H 75 cm





# Sahara

COLLECTION







# Sahara

COLLECTION

Inspired by foldable furniture from the colonial era, the Sahara collection evokes a classic modern look. The chair-stand available for both, chair and deck chair, emphasizes functionality and practical use for a fast break down and storage.

The folding tables are split into separate top and base units. This allows a single person to move and set up the furniture.













VIDEO

REF. 301  
Sahara Folding Chair with Arms in Teak



VIDEO

REF. 303  
Sahara Chair Stand in Teak







REF 307  
Sahara Square Bistrot Table in Teak  
80 x 80 x H 74 cm



REF 306  
Sahara Round Bistrot Table in Teak  
ø 90 x H 74 cm





# ENEAS

COLLECTION





# ENE A

The Crochet Covers of Enea Products are HAND MADE.

Indonesia has an old history and culture of fine crafting across everything from wood working to weaving.

With a pouf in 3 sizes and a cushion available in 4 sizes, both available in 12 bright colors, we offer a functional accessory that can be combined with a multitude of outdoor furniture compositions.













REF E11  
Enea Pouf Small size, ø 48 x H 43 cm



REF E12  
Enea Pouf Medium size, ø 65 x H 44 cm



REF E13  
Enea Pouf large Size, ø 116 x H 44 cm







## MATERIAL SPECIFICATIONS

Indonesia has a long history and **culture of fine crafting**, across everything from wood working to weaving. Combined with leading-edge technologies, this allows us to produce furniture of exceptional quality. The new Enea trays can transform each of the 3 pouf sizes into a practical occasional table. The small and medium trays have handles that enable them to be used as serving trays.

The sizes of our Pouf Enea has a core of durable high quality memory foam. Is is coated with Polyester **fiber in high quality and provided** with an Inner Cover made of 100% UV waterproof Polyester repelling water up to 400 mm H2O.

The Crochet Cover is HAND MADE and can be cleaned by washing at 30°C.





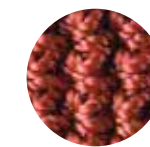
Anthracite



Nordic Green



Bordeaux



Rose



Gold



Ocher



Ice Blue



Orange



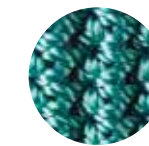
Navy Blue



Silver



Copper



Turquoise

REF E4  
Enea Hand Crocheted  
**Scatter Cushions in polipropilene**  
40 x 40 cm

REF E64  
Enea Hand Crocheted  
**Scatter Cushions in polipropilene**  
60 x 40 cm

REF E5  
Enea Hand Crocheted  
**Scatter Cushions in polipropilene**  
50 x 50 cm

REF E6  
Enea Hand Crocheted  
**Scatter Cushions in polipropilene**  
60 x 60 cm





# LUGANO

COLLECTION







# LUGANO

Danish expert in Teak Architect B. Povl Eskildsen combines 3 materials to produce the Lugano Collection, **that defines light modern style with clever and nice details.**

The interaction between teak, sling and stainless steel with its functionality and comfort make Lugano ideal for both contract and residential use.













REF. 228  
200x200 cm

REF. 202 ANT





REF. 226  
235/330xH105 cm

REF. 202 T





VIDEO









REF 221  
Lugano Square Table in Teak  
90 x 90 x H 74 cm



REF 202  
Lugano Stacking Chair with Arms in Teak







VIDEO

REF. 202  
Lugano Stacking Dining Chair with Arms in Teak

REF. 224  
Lugano Extending Table in Teak  
170/245x100 cm



REF 221  
Lugano Square Table in Teak  
90 x 90 x H 75



REF 223  
Lugano Rectangular Table in Teak  
160 x 90 x H 75



REF 224  
Lugano Rectangular Extending Table in Teak  
170/280 x H 75

Available other 12 sizes of tables (see page 205)







REF. 541



REF. 220  
140x80 cm



REF. 204



REF. 200



REF. 201

REF. 232  
127x104 cm





VIDEO



REF. 232  
Lugano Rectangular Gate Leg Table in  
solid Teak, reclines both sides,  
(Seats 4)  
127 x 104 x h 73 cm

REF. 201  
Lugano Teak Folding Arm Chair  
in solid Teak



VIDEO



REF. 229  
Lugano Round Folding Table  
in solid Teak (Seats 4)  
ø 112 x h 75 cm

REF. 204 T  
Lugano Folding Chair with arms,  
frame in solid Teak,  
seat & back in sling





REF. 607  
h 53 cm

REF. 605  
h 30 cm

REF. 220  
140x80 cm

REF. 204 T





REF. 240 ANT  
+ REF. 240 R/ANT





REF. 240 T

REF. 225  
50x50 cm





VIDEO

REF. 240  
Lugano Stacking Sunlounger with Wheels in Teak  
Available roof REF. 240 R







REF. 251 T

REF. 222  
70x60 h 65 cm





VIDEO

REF 251  
Lugano Multiposition Lounge Deck Chair





# HERITAGE

TIMELESS OUTDOOR COLLECTION







## HERITAGE

TIMELESS OUTDOOR COLLECTION

Designed in the Past, Made for Tomorrow.

This timeless outdoor collection is Made of solid Premium Teak. The surface comes in the high end buffed finish with a beautiful sheen.

The very comfortable cushion sets include a lumbar scatter cushion for a major relaxation.

Architect Povl B. Eskildsen has combined Soft classical curves and straight lines on the back, donating to this classic collection more updated beauty and a modern touch. Exclusive brass parts for feet and arms, galvanized in palladium, gold and custom, and details in Australian mother of pearl make Heritage Collection peerlessly in the high end classical outdoor furniture.





REF. 1001

REF. 1003

REF. 1005  
58x58xH45 cm

REF. 1006  
125x69xH45 cm





VIDEO

REF. 1014

REF. 1005  
58x58xH45 cm













REF. 1002



REF. 1003

REF. 1001

REF. 1005  
58x58xH46 cm

REF. 1015  
156x80xH46 cm

REF. 1002





REF. 1016  
45x45xH52 cm

REF. 1004

REF. 1005  
58x58 cm

REF. 1002

REF. 1001













1001 HERITAGE Deep Seating Lounge Chair x 2  
1003 HERITAGE Deep Seating Lounge 3 Seater x 1  
1015 HERITAGE Large Coffee Table 156 x 80 cm x 1  
1005 HERITAGE Side Table 58x58 cm x 2  
All brass feet: Polished Palladium Finish  
Medallion: White Australian Mother-of-Pearl



REF. 1050 & 1051 & 1052  
Heritage Serving Tray with small and large Tray in Teak  
Small tray: Ref. 1052 30x46 cm  
Large tray: Ref. 1051 45x61 cm

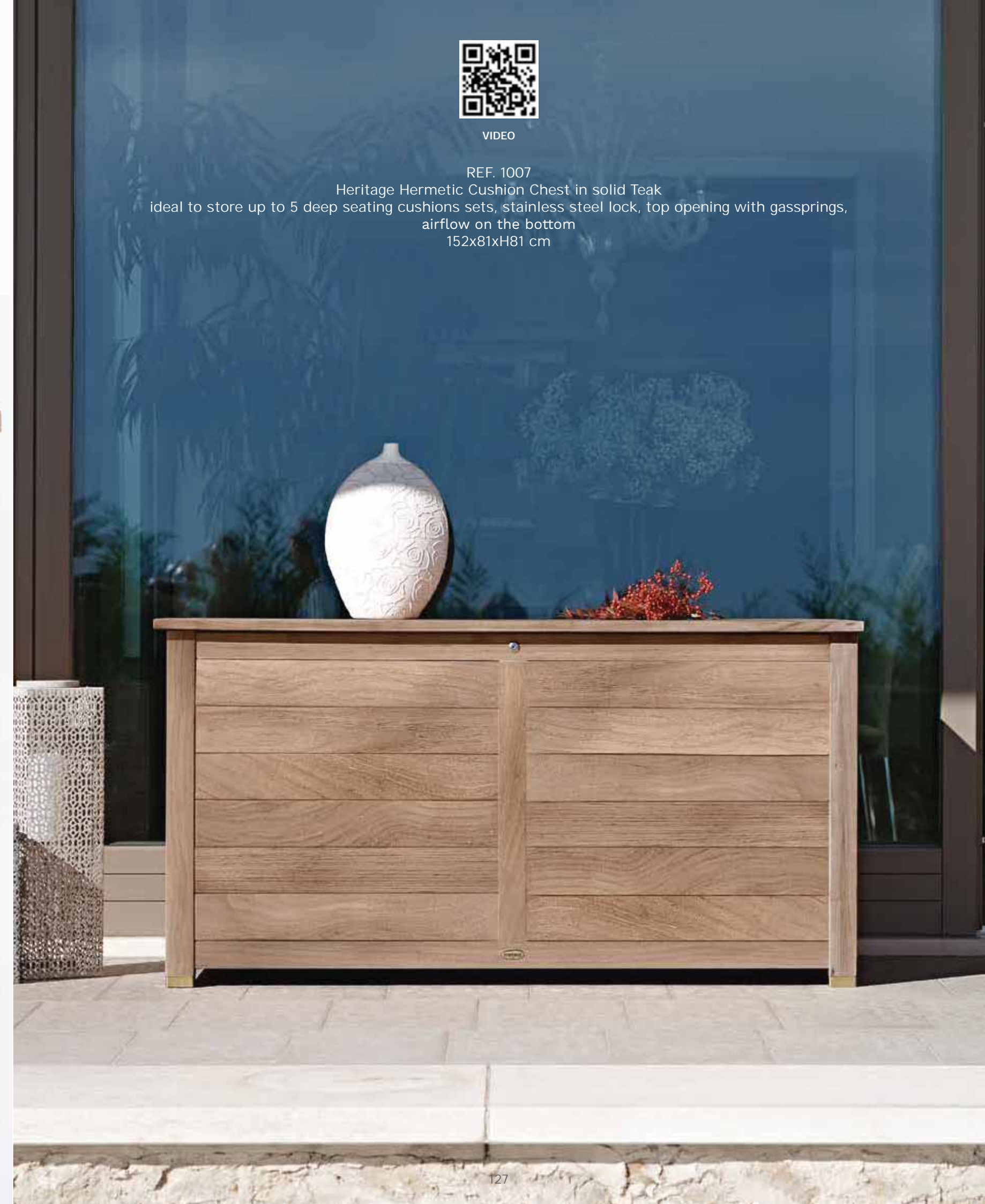


Ref. 1050



VIDEO

REF. 1007  
Heritage Hermetic Cushion Chest in solid Teak  
ideal to store up to 5 deep seating cushions sets, stainless steel lock, top opening with gassprings,  
airflow on the bottom  
152x81xH81 cm







# CAMBRIDGE

COLLECTION





## CAMBRIDGE

With a tip of the hat to classic teak outdoor furniture, Cambridge takes classic teak category to a new level of comfort and practicality.

The essence of traditional heavy and uncomfortable teak chairs of old times are morphed into a classic, yet light and comfortable design.

The collection is complemented by the Cambridge Buffet Table, a food **preparation table that features soft-close drawers** and an integrated champagne cooler/ice box, as well as serving trays and a wide range of tables and benches in Teak.





REF. 106

REF. 125  
240/300x102 cm



REF. 107

REF. 123  
200/260x102 cm

REF. 106





VIDEO

REF. 123

Cambridge Rectangular Extending Table,  
solid Teak (Seats 8 - 10)  
200 / 260 x 103 cm x h 75



VIDEO

REF. 125

Cambridge Oval Large Extending Table,  
solid Teak, sincron quality extension system (Seats 10 - 12)  
240 / 300 x 100 cm h 75 cm



VIDEO

REF. 124

Cambridge Round Extending Table,  
solid Teak, sincron quality extension system (Seats 6 - 8)  
138 / 183 x 138 cm h 75











REF. 132

REF. 131



VIDEO

REF. 131 + 132  
Cambridge Multifunctional Buffet Table & Cambridge Shelf







REF. 183

REF. 602

REF. 181  
Adjustable Back

REF. 127  
56x56xH47 cm

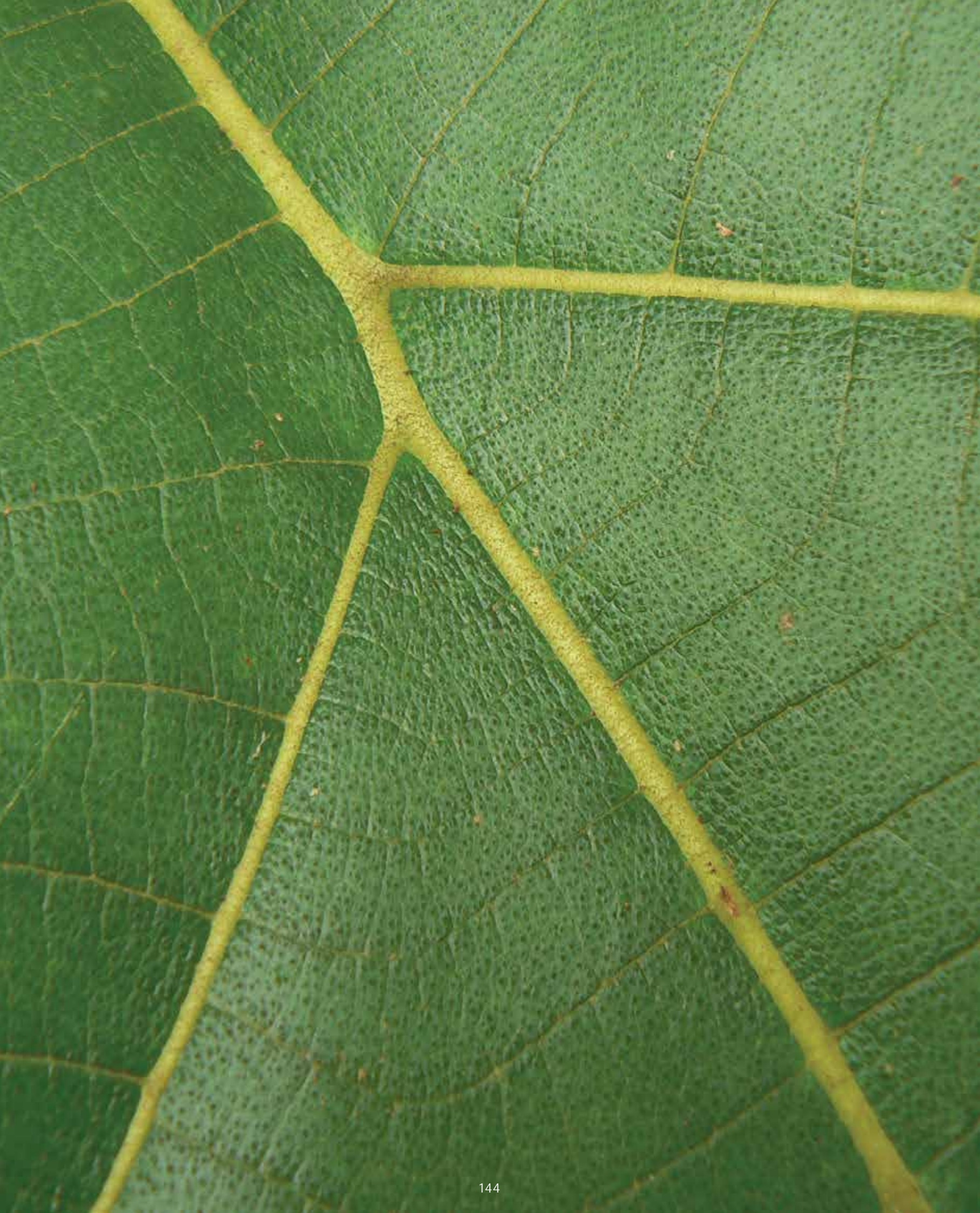
REF. 128  
56x56xH60 cm

REF. 129  
132x65xH47 cm

REF. 130  
50x39xH29 cm

REF. 120





REF. 185





REF. 135  
Cambridge Bench, solid Teak  
135 cm h 45 cm



REF. 160  
Cambridge Bench, solid Teak  
160 cm h 45 cm



REF. 190  
Cambridge Bench, solid Teak  
190 x h 45 cm







REF. 110





REF. 151  
Cambridge Multipositions Lounge Deck Chair  
(5 adjustable Backpositions)

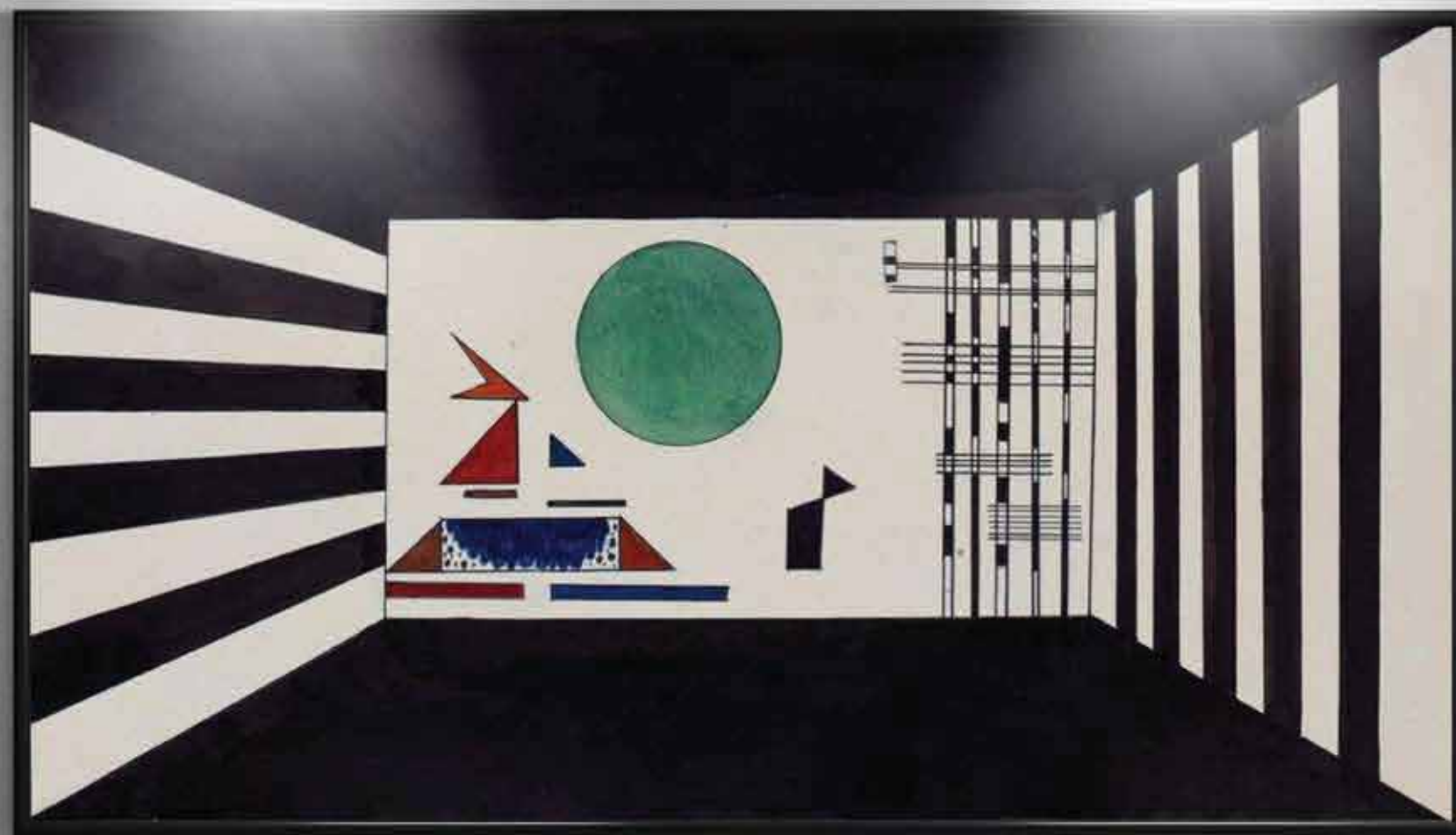
Removable Footstool











QUADRO  
COLLECTION







## QUADRO

The Quadro chair is the restyling of an icon in the modern outdoor design.

Architect B. Povl Eskilden had designed the original version in the far 2003 and decided in 2012 to restyle the chair and to confer the design to ARCO OUTDOOR.

Amongst the new solid extending table and sunlounger, Quadro Collection offers a multifunctional buffet food preparation table that **features soft-close drawers and an integrated champagne cooler/ice box.**





REF. 405  
215/282x105xH75 cm

REF. 1007

REF. 402 C





VIDEO

REF. 405  
**Quadro Butterfly Extending Table**  
 214/282 x 105 cm

REF. 402  
**Quadro Stacking Dining Chair with Arms**









# cube

COLLECTION







# cube

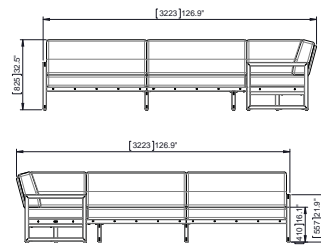
Inspired by the simple and clean lines of Johan Von Spreckelsen's Le Grande Arche in Paris, the Cube dining and lounge collection, in teak, includes sculptural pieces of furniture that are not only eye-catching but also light, practical and durable.

The construction of the modular elements are reinforced with stainless steel components that provide the strength and durability required for many years of daily use.

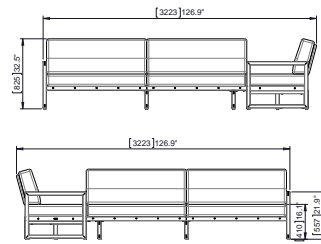




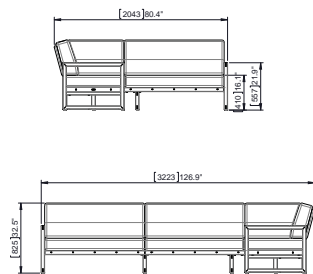




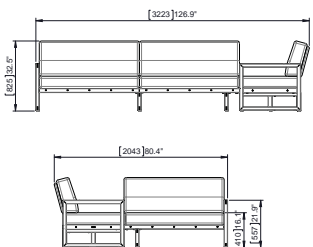
REF. 551  
Cube Modular Extra Large Lounge Group,  
Frame in Teak Grade A, Cushions in Acrilic  
100% with internal waterresistant coating.  
Core of durable high quality foarm.  
322 x 322 x h 41 cm



REF. 552  
Cube Modular Extra Large Lounge Group,  
Extra Large with Corder Table, Frame in  
Teak Grade A, Cushions in Acrilic 100% with  
internal waterresistant coating. Core of  
durable high quality foarm.  
322 x 322 x h 41 cm



REF. 553  
Cube Modular Lounge Group, Large, Frame  
in Teak Grade A, Cushions in Acrilic 100%  
with internal waterresistant coating. Core  
of durable high quality foarm.  
322 x 204 x h 41 cm



REF. 554  
Cube Modular Lounge Group, Large  
with Corner Table, Frame in Teak Grade  
A, Cushions in Acrilic 100% with internal  
waterresistant coating. Core of durable high  
**quality foarm.**  
322 x 204 x h 41 cm

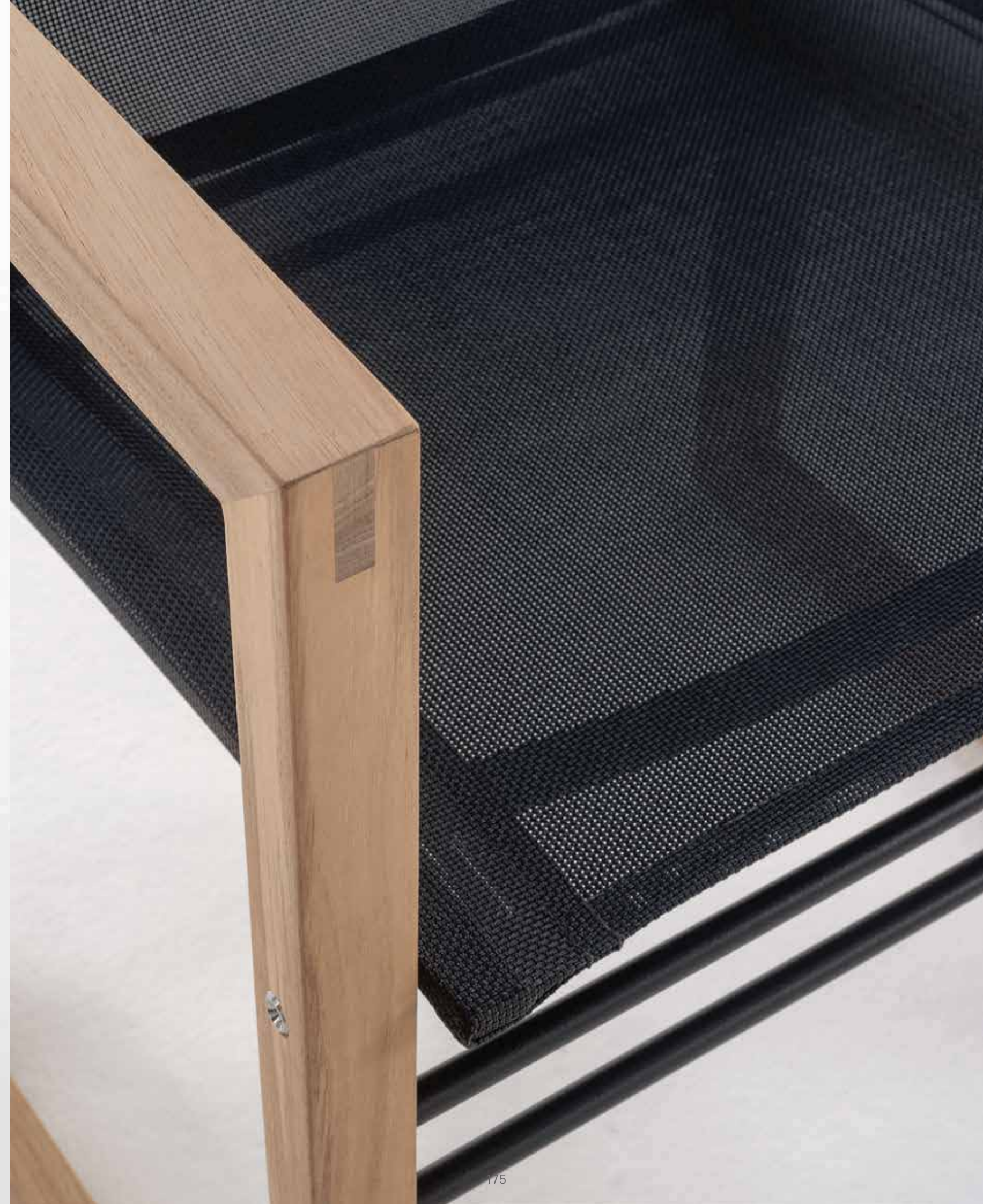








REF. 502  
Cube Sling Dining Chair with Arms







REF. 507 T

REF. 524  
ø 120 cm

REF. 525  
ø 60 cm









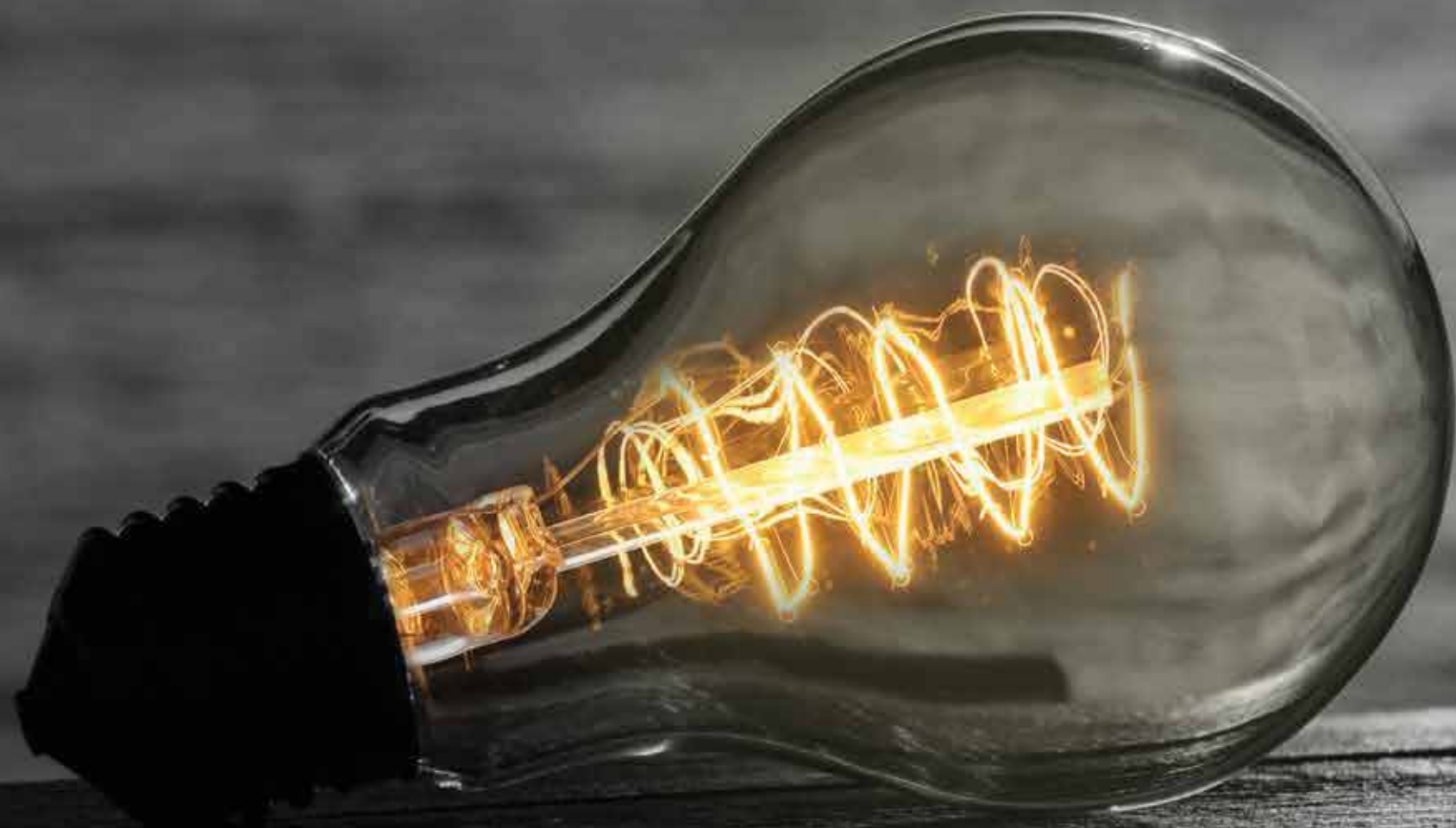
REF. 540  
100x45xH91 cm

REF. 541  
113x51xH91 cm



# LUMEN & TULIP

Outdoor Solar Light Collection







# LUMEN & TULIP

Outdoor Solar Light Collection

Our hybrid solar and USB-C rechargeable lantern lamps, are not only delightful to look at, but have a performance that is superb.

The lamps can output over 600 Lumens of light, are dim-able in 3 steps and can be operated from **touch buttons on the top of the lamp** or from a radio based remote control with a range of up to 50m/165'.

The remote signal can travel through most walls. The lamps can be set to operate autonomously; on the dusk and off at dawn or when the **battery pack runs low. At the lowest brightness setting, the run-time is up to 35 hours.** A single remote control can be paired to control up to 256 lamps.











# LUMEN & TULIP

Outdoor Solar Light Collection

## LAMP SPECIFICATIONS:

- Light output of >600 Lumens @ 2.700 Kelvin
- Supplied with radio-based remote control with a range of up to 50 m / 165'
- Dim-able: 30, 60 & 100%
- Touch controls
- **13,200 mAh Lithium-Ion battery**
- Up to 35 hour run time at 30%
- Up to 10 hour run time at 100%
- Can operate autonomously
- Can charge from the integrated solar-panel or a USB adapter (adapter not included)
- Supplied with a USB-A to USB-C cable
- Memory for previously **used setting**
- **CO, FCC, RoHS & IP65 certified**

# TULIP

REF. 614







REF. 606  
H40 cm

REF. 605  
H30 cm

REF. 607  
H50 cm



# TEAK MAINTENANCE







VIDEO  
FOR TEAK MAINTENANCE



## TEAK CLEANER

Restores and brightens  
wethered teak & hardwood



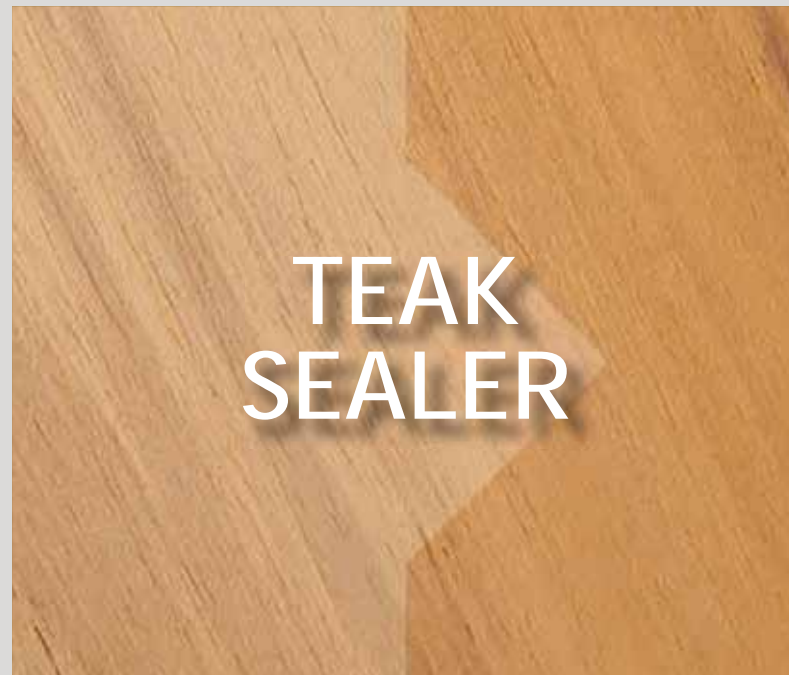
### TEAK CLEANER

#### INSTRUCTIONS FOR USE:

1. Before using the TEAK PROTECTOR, eye protection and rubber gloves should be worn. Cover the ground under your working area before cleaning.
2. First moisten the furniture with water.
3. Shake TEAK CLEANER before use.
4. Apply TEAK CLEANER with a soft cloth or sponge. Allow to soak for 3 minutes.
5. Brush the furniture clean with a scrubbing pad in the direction of the grain.
6. Rinse furniture well with water.
7. For prolonged colour, leave the furniture to dry and treat with TEAK SEALER. For a silver grey colour, use TEAK PROTECTOR.

## TEAK SEALER

Maintains the light-brown colour  
of teak for a  
longer time



### TEAK SEALER

#### Why is it so much better than teak-oil:

1. It maintains the light-brown colour of teak for a longer time:  
Up to 4 times longer than teak-oil • Up to twice as long as other sealers
2. It's environment-friendly because it is 100% water-based; no toxic fumes; non flammable; EcoSafe.
3. It is fast and easy to apply.
4. It's not an oil, it is not greasy: clothes stay clean.
5. It is resistant to mould and prevents black spots on the teak.

#### INSTRUCTIONS FOR USE:

1. Before using the TEAK PROTECTOR, eye protection and rubber gloves should be worn. Cover the ground under your work area before starting.
2. New teak: first clean with our Teak Cleaner to remove some of the natural teak oils (or weather for 2 weeks outside before treatment)
3. Grey teak or teak treated with teak-oil must first be cleaned with TEAK CLEANER.
4. If cleaned wood feels rough, sand lightly before treating with Protector. Make sure the teak is 100% dr and free of dust.
5. Shake and stir TEAK PROTECTOR at least a minute before use. Insufficient shaking can lead to uneven decolourisation.
6. We suggest you try the TEAK PROTECTOR on a small area first (e.g. the back of a leg) to judge if the colour meets your expectations.
7. Apply a very thin layer of TEAK PROTECTOR evenly over the furniture with a dust free cloth. Apply a second very thin coat after 30 minutes drying time
8. It is recommended that you treat your furniture with TEAK PROTECTOR at least once a year.

## TEAK PROTECTOR

**Invisible after application.**  
Makes teak reppellent of water  
and moisture.  
Helps to prevent stains caused  
by food and drinks.



### TEAK PROTECTOR

**An almost invisible shield to prevent food stains (coffee, ketchup, red wine, olive oil, etc.) from penetrating into teak.**

#### INSTRUCTIONS FOR USE:

1. Before using the TEAK PROTECTOR, eye protection and rubber gloves should be worn. Cover the ground under your work area before starting.
2. New teak: first clean with our Teak Cleaner to remove some of the natural teak oils (or weather for 2 weeks outside before treatment).
3. Before using the TEAK PROTECTOR on dark grey teak, clean the wood with our teak cleaner. If cleaned wood feels rough, sand lightly before treating with TEAK PROTECTOR.
4. Make sure the teak is 100% dry and free of dust.
5. Shake for at least one minute before use. Apply a thin layer of TEAK PROTECTOR with a soft cloth.
6. Allow to dry for one hour and then apply a second thin coat of TEAK PROTECTOR. Let the teak dry for 48 hours before exposure to moisture.
7. It is recommended that you treat your teak furniture with TEAK PROTECTOR once a year. Tabletops should be treated more often.





# TEAK MAINTENANCE

Dear Readers,  
Are you the owner of a yacht with Teak deck and furniture?  
Do you already have Teak garden furniture at Your home?

Either way, you will be aware that You have several options for maintaining Teak, being the best natural material for outdoor.

So how to manage the maintenance of teak surfaces?  
There are 4 basic paths:

- 1) The maintenance of your teak is managed by You and Your staff once a year or once every 2 years, using our maintenance products. Teak cleaner, Teak Protector, Teke Sealer.
- 2) Entrust the maintenance to an external company that restores the surfaces to a state similar to new. We reccomand to use our Teak Cleaner, Teak Sealer and Teak Protector.
- 3) Book our ARCO OUTDOOR CARE SERVICE carried out by our Team. You can write us by informing about n° pieces, type, age of furniture You would wish to be restored and ask for quotation at [contact@arcoarredi.com](mailto:contact@arcoarredi.com)
- 4) For all people who appreciate the nice silversheen of weathered Teak, the maintainance becomes very easy by using once in a while our Teak Cleaner.

ORIGINAL

WEATHERED  
TEAK

CLEANER

SEALER

PROTECTOR





# PRODUCTS & MEASURES



NEW YORK

REF. 900  
New York Lounge Armchai



W 79 H 96 AH 57 SH 36

REF. 901  
New York Footstool



D 54 W 57 H 34/26

REF. 902  
New York Side Table



45 x 45 x H 46

REF 307  
Sahara Square Bistrot Table



80 x 80 x H 74 cm

304  
Sahara Folding Deck Chair,  
frame in solid teak, seat & back in sling  
4 adjustable positions



cm 66 x 80 x h 98

305  
Sahara Chair Stand in solid teak  
(to fit 4 Deck Chairs)



cm 65 x 7 x h 7

ADIRONDACK

700  
Adirondack Chair, in solid Teak



cm 74 x 51 X H seat height 35

701  
Adirondack Footstool, in solid Teak



cm 58 x 56 x H seat height 32

702  
Adirondack Side Table, in solid Teak



cm 45 x 45 x H 46

Nautilus

885  
Nautilus Folding Directors Chair, frame  
in solid teak,



cm 60 x 55 x h 85

810  
Nautilus Pedestal Folding Table (Flip Top)  
Top in solid Teak



cm 80 x 80 x h 75

REF 811  
Nautilus folding round Bristot table



ø 90 x H 75 cm

Sahara

301  
Sahara Folding Chair  
frame in solid teak, seat &  
back in sling



cm 52 x 56 x h 82

302  
Sahara Folding Chair with arms  
frame in solid teak, seat & back  
in sling



cm 58 x 58 x h 82

303  
Sahara Chair Stand in solid teak  
(to fit 4 Folding Chairs)



cm 65 x 7 x h 6

REF 306  
Sahara Round Bistrot table



ø 90 x H 74 cm

ENEA

REF E11  
Enea Pouf small size, ø 48 x H 43 cm



REF E12  
Enea Pouf medium size, ø 65 x H 44 cm



REF E13  
Enea Pouf large size, ø 116 x H 44 cm



E4/E5/E6/E64  
Enea Hand Crocheted  
Scatter Cushions in polipropilene



E4 cm 40 x 40  
E5 cm 50 x 50  
E6 cm 60 x 60  
E64 cm 60 x 40



Anthracite



Nordic Green



Bordeaux



Ice Blue



Orange



Gold



Rose



Copper



Silver



Navy Blue



Ocher



Turquoise



**NEW YORK**  
**ADIRONDACK**  
*Nautilus*  
*Sahara*  
**ENEAS**

PRODUCTS & MEASURES





# LUGANO

221  
Lugano Square Dining Table, in solid Teak  
(Seats 4)



cm 90 x 90 x h 75

226  
Lugano Rectangular Extra Large  
Extending Table, in solid teak (Seats 10  
- 12)



cm 235 / 330 x 100 H 75

229  
Lugano Round Folding Table  
in solid teak (Seats 4)



cm ø 112 H 75

232  
**Lugano rectangular Gate Leg table in  
solid teak, reclines both sides (Seats 4)**



cm 127 x 104 x H 73

2002  
Lugano Counter Height Bar Chair with  
Arms Frame in solid teak, seat in sling  
components in brushed stainless steel



cm 55 x 61 x h 101

223  
Lugano Rectangular Dining Table  
in solid teak (Seats 6)



cm 160 x 90 x h 75

228  
Lugano Large Square Dining Table  
in solid teak (Seats 12)



cm 200 x 200 x h 75

220  
Lugano Rectangular Folding Table  
in solid teak (Seats 4)



cm 140 x 80 x H 75

251  
Lugano Multiposition Deck Chair in solid  
teak, seat & back in sling, with integrated  
footstool/ 7 adjustable positions including  
sunlounger position



cm 73 x 141 x h 103, cm 73 x 182 x h 58

240  
Lugano stacking Sunlounger with  
wheels, frame in solid teak, seat &  
back in sling



cm 69 x 205 x h 36

224  
Lugano Rectangular Large Extending  
Table, in solid teak (Seats 8 - 10)



cm 170 / 280 x 100 cm h 75

227  
Lugano Counter Height Dining Bar Table,  
in solid teak (Seats 6)



cm 160 x 90 x H 89

231  
Lugano Oval Gate Leg Table, reclines  
both sides, in solid teak (Seats 4)



cm ø 120 x h 71

205 & 206  
Lugano stacking Lounge Chair  
**Frame in solid teak & Lugano Ottoman**  
Frame in solid teak



cm 71 x 70 x h 80 & cm 54 x 52 x h 37

240 R  
Lugano roof, frame in stainless steel



cm 70 x 52 x 5

# LUGANO

202  
Lugano stacking Dining Chair with arms  
Frame in solid teak, seat & back in sling  
components in brushed stainless steel



cm 59 x 59 x h 86

200  
Lugano Teak Stand for Folding Chair



cm 84 x 6 x h 7,5

203  
Lugano Sling Recliner with adjustable  
back, stackable - (3 positions) - Frame  
in solid teak, seat and back in sling



cm 62 x 83 x h 112

201  
Lugano Teak Folding Arm Chair



cm 54 x 64 x h 89

204  
Lugano Folding Chair with arms, frame  
in solid teak, seat & back in sling



cm 54 x 64 x h 89

225  
Lugano Side Table  
in solid teak



cm 50 x 50 x h 40

222  
Lugano Balcony table  
in solid teak



cm 70 x 60 x h 65

# QUADRO

405  
**Quadro Butterfly Extending Table**  
frame in brushed stainless steel, top in  
solid teak slats (Seats 8 - 10)



closed cm 215 x 105 x h 75  
opened cm 282 x 105 x h 75

415  
Quadro stacking Sunlounger - Frame  
in brushed stainless steel, seat & back in  
sling



cm 71 x 204 x h 36

410 & 411  
Quadro Multifunctional Buffet Table with  
wheels, frame in stainless steel, components in  
solid teak + Quadro Shelf in solid Teak



cm 149 x 55 x h 88

406  
Quadro dining table, frame in brushed  
stainless steel, top in solid Teak slats  
(Seats 8)



220 x 105 cm

967 BL  
Quadro side table frame in stainless steel,  
tabl top in granite burundi black, brushed  
**and flamed**



cm 50 x 50 x H 40

402  
**Quadro stacking Dining Chair with teak**  
arms frame in brushed stainless steel  
seat & back in sling



cm 58 x 61 x h 89

967 TRA  
Quadro side table frame  
in stainless steel,  
Table top in Persian Travertin.



cm 50 x 50 x H 40







# HERITAGE

TIMELESS OUTDOOR COLLECTION

1001

Heritage Lounge Chair in solid teak  
brassfeet & cushions set included



cm 75 x 91 x h 86

1004

Heritage Ottoman in solid teak  
brassfeet & cushion included



cm 54 x 54 x h 27

1015

Heritage Large Rectangular Coffee Table  
in solid teak, brassfeet included



cm 156 x 81 x h 46

1014

Heritage Sunlounger in solid teak  
brassfeet & cushions set included  
Fabric Sunbrella



cm 205 x 77 x h 29

1017

Heritage Large Planter in solid teak



cm 57 x 57 x h 75  
Large size H 75

1002

Heritage Lounge 2 Seater in solid teak  
brassfeet, cushions set included



cm 140 x 91 x h 86

1005

Heritage Square Side Table in solid teak,  
58 x 58 cm - brassfeet included



cm 58 x 58 x h 46

1011

Heritage Dining Armchair in solid teak  
brassfeet and medallion included.  
Seat cushion not included



cm 59 x 58 x h 92

1007

Heritage Cushion Box in solid teak  
brassfeet included - 152 x 81 x h 81 cm  
Ideal to fit 5 sets of deepseating cushionsets



cm 152 x 81 x h 81

1053

Heritage Cutting board in solid teak



cm 56 x 38 x h 3

1003

Heritage Lounge 3 Seater in solid teak  
brassfeet&cushions set included



cm 205 x 91 x h 86

1006

Heritage Small Rectangular Coffee Table  
in solid teak, brassfeet included



cm 125 x 69 x h 46

1008

Heritage Dining Table in solid teak  
brassfeet included (Seats 6 - 8)



cm 240 x 110 x h 75

1016

Heritage Small Planter in solid teak



cm 54 x 54 x h 52  
Small size H 52

1050 + 1051 + 1052

Heritage folding tray stand + large and  
small tray



tray stand cm 52 x 42 x h 62  
large tray cm 61 x 45 x h 5,  
small tray cm 46 x 30 x h 5

# LUMEN

605

Lumen Teak Pendant/Lantern Lamp,  
Small Solid Teak slats



cm H 30 ø 22 cm

606

Lumen Teak Pendant/Lantern Lamp,  
Medium Solid Teak slats



cm H 38 CM ø 22 cm

607

Lumen Teak Pendant/Lantern Lamp,  
Large Solid Teak slats



cm H 53 ø 22 cm

608

Lumen Teak Floor Standing  
Lamp Solid Teak slats



cm H 127 ø 22 cm

601

Lumen Woven Pendant/Lantern Lamp,  
Small Rope in Polypropilene



cm H 30 ø 22 cm

602

Lumen Woven Pendant/Lantern Lamp,  
Medium Rope in Polypropilene



cm H 40 ø 22 cm

603

Lumen Woven Pendant/Lantern Lamp,  
Large Rope in Polypropilene



cm H 50 ø 22 cm

604

Lumen Woven Floor Standing Lamp  
Rope in Polypropilene



cm H 127 ø 22 cm

611

Lumen diam 245 mm Steel Plate  
for Floor Standing Lamp  
for references 608 and 604



cm ø 25 cm, Spessore 3 cm

612

Lumen Ground Spear  
for Floor Standing Lamp  
for references 608 and 604



cm H 50

613

Lumen Anchor  
for Floor Standing Lamp  
for references 608 and 604



cm ø 10,5 x H 7

# TULIP

614

Tulip Lantern Lamp, Frame in powder  
coated aluminium, Teak components



cm ø 40 cm, h 62

615

Pedestal for Tulip Lantern Lamp,  
powdercoated stainless steel



cm h 60

616

Pedestal for Tulip Lantern Lamp,  
Large, Small



cm h 30



HERITAGE  
TIMELESS OUTDOOR COLLECTION  
LUMEN

TULIP

PRODUCTS &  
MEASURES





# cube

525  
Cube Round Side Table



cm ø 60 x h 45

524  
Cube Conversation Table, in solid Teak



cm ø 120 x h 40

558  
**Cube Modular Arm Unit, Left,**  
Frame in Teak Grade A



cm 122 x 84 x h 41

559  
Cube Modular Arm Unit, Right,  
Frame in Teak Grade A



cm 122 x 84 x h 41

560  
**Cube Modular Panel Unit, Left,**  
Frame in Teak Grade A



cm 128 x 84 x h 41

561  
Cube Modular Panel Unit, Right,  
Frame in Teak Grade A



cm 128 x 84 x h 41

502  
Cube sling Dining Chair with arms  
frame in solid teak



cm 56 x 59 x h 89

523  
Cube Dining Table in solid teak  
(Seats 6 - 8)



cm 230 x 95 x h 72

510  
Cube Backless Bench in solid teak



cm 120 x 40 x h 46

559  
Cube Modular Arm Unit, Right,  
Frame in Teak Grade A



cm 122 x 84 x h 41

560  
**Cube Modular Panel Unit, Left,**  
Frame in Teak Grade A



cm 128 x 84 x h 41

561  
Cube Modular Panel Unit, Right,  
Frame in Teak Grade A



cm 128 x 84 x h 41

505  
Cube Lounge Chair - frame in solid  
teak,  
seat & back in sling



cm 66 x 86 x h 95

507  
Cube Swivel Lounge Rocking Chair,  
rotating 240° frame in solid teak,  
seat & back in sling



cm 66 x 86 x h 96

506  
**Cube Ottoman - frame in solid teak,**  
seat in sling



cm 65 x 45 x h 48

562  
Cube Modular Sofa Corner,  
Frame in Teak Grade A



cm 82 x 82 x h 41

563  
Cube Modular Extension Unit,  
Frame in Teak Grade A



cm 118 X 84 X h 41

570  
Cube Modular Corner Table in solid Teak



cm 72 x 72 x h 27

511  
Cube Sunlounger - frame in solid teak,  
seat & back in sling



cm 202 x 65 x h 36

512  
Cube Optional Clamp for Cube lounge  
(set of 4) Convert 2 loungers  
into a double lounge



cm 8 x 5 x h 2

530  
Cube Planter frame in aluminium,  
slats in solid teak



cm ø 48 x h 39

571  
Cube Modular Full width End Table  
with 1 short legs in solid Teak



cm 72 x 72 x h 27

572  
Cube Modular Half width End Table  
with 1 short legs in solid Teak



cm 72 x 33 x h 27

527  
Cube large Coffee Table, in solid Teak



cm 120 x 80 x h 41

531  
Cube Stand for Cube Planter anthracite



cm ø 52 x h 38

532  
Cube Teak Cover for Cube Planter



cm ø 44 x h 1,5

534  
Cube Aluminium Cover  
for Cube Planter Anthracite



cm ø 44 x h 2

528  
Cube small Coffee Table, in solid Teak



cm 72 x 58 x h 34

551  
Cube Modular Lounge Group, Extra Large,  
Frame in Teak Grade A



cm 322 x 322 x h 41

552  
Cube Modular Lounge Group, Extra  
Large with Corder Table, Frame in Teak  
Grade A



cm 322 x 322 x h 41

540  
Cube Sideboard, in solid Teak



cm 100 x 45 x h 91

541  
Cube Serving Trolley, in solid Teak



cm 113 x 51 x h 91

526  
Cube Small Side Table, in solid Teak



cm 40 x 40 x h 35







# CAMBRIDGE

106  
Cambridge Stacking Arm Chair, solid Teak



cm 58 x 65 x h 90

107  
Cambridge Stacking Side Chair, solid Teak



cm 49 x 65 x h 90

120  
Cambridge Stool, solid Teak



cm 34 x 34 x H 46

128  
Cambridge Lamp Table, solid Teak



cm 56 x 56 x H 60

130  
Cambridge Low Table, solid Teak



cm 50 x 39 x H 29

129  
Cambridge Coffee Table, solid Teak



cm 132 x 65 x H 47

181  
Cambridge seating Recliner Lounge Chair, solid Teak



cm 71 x 73 x h 86

182  
Cambridge Seating 2 Seater, solid Teak



cm 134 x 73 x h 86

183  
Cambridge Seating 3 Seater, solid Teak



cm 196 x 73 x h 86

114  
Cambridge Dining Table, solid Teak (Seats 8 - 10)



cm 220 x 102 x h 75

115  
Cambridge Dining Table, solid Teak (Seats 8 - 12)



cm 275 x 102 x h 75

123  
Cambridge Rectangular Extending Table, solid Teak (Seats 8 - 10)



cm 200 / 260 x 100 H 75

184  
**Cambridge Ottoman,** solid Teak



cm 62 x 56 x h 37

185  
Cambridge lounge rocking chair, solid Teak, tilting meccanism up to 240° including set of cushions



cm 71 x 75 x h 91

135  
Cambridge Bench, solid Teak



cm 135 x 59 x h 90

124  
Cambridge Round Extending Table, solid Teak (Seats 6 - 8)



cm 138 / 183 x 138 H 75

125  
Cambridge Oval Large Extending Table, solid Teak (Seats 10 - 12)



cm 240 / 300 x 100 H 75

151  
Cambridge Deck Chair with adjustable back 4 positions and removable footrest



cm 148 x 60 H 105

160  
Cambridge Bench, solid Teak



cm 160 x 59 x h 90

190  
Cambridge Bench, solid Teak



cm 192 x 59 x h 90

110  
Cambridge Rocking Chair, solid Teak



cm 66 x 85 x h 110

131  
Cambridge Buffet Table, solid Teak



cm 149 x 54 x h 88

132  
Cambridge Bar Shelf for Buffet Table, solid Teak



cm 149 x 15 x h 1,5

127  
Cambridge Side Table, solid Teak



cm 56 x 56 x H 47

# CAMBRIDGE

## TEAK MAINTENANCE PRODUCTS

A61 TEAK CLEANER  
Restores and brightens weathered teak & hardwood



A64  
3 Application Cloths  
For applying Sealer & Protector



A62 TEAK SEALER  
Maintains the light-brown colour of teak for a longer time



A65  
2 Scrubbing Pads  
For easy cleaning of wooden outdoor furniture. Reusable: Just clean them in water



A63 TEAK PROTECTOR  
Makes teak repellent to water and moisture. Helps to prevent stains caused by food and drinks.  
**Invisible after application**





CAMBRIDGE

PRODUCTS & MEASURES

TEAK MAINTENANCE PRODUCTS





# FINISHING & FABRICS





OUTDOOR FABRIC SELECTION FOR THE COLLECTIONS  
HERITAGE & CAMBRIDGE



DEHORS LA PONCHE  
AD9018 TRRE  
001 Biancore  
75% Trevira®  
25% Poliestere  
1138 gr/ml H145 cm



D'ESTE  
AT8010  
018 Malachite  
100% Trevira®  
764 gr/ml H145 cm



D'ESTE  
AT8010  
001 Shaded White  
100% Trevira®  
764 gr/ml H145 cm



DEHORS LAVANDOU  
AD9019 TRRE  
001 White  
80% Trevira®  
20% Poliestere  
1000 gr/ml H148 cm



DEHORS LAVANDOU  
AD9019 TRRE  
003 Biancore  
80% Trevira®  
20% Poliestere  
1000 gr/ml H148 cm



DEHORS PRINCIPATO  
AD9005  
001 White - Kasha  
100% Trevira®  
315 gr/ml H140 cm



DEHORS MONACO  
AD9006  
001 White - Kasha  
100% Trevira®  
315 gr/ml H140 cm



DEHORS CAP FERRAT  
AD9015TR  
001 Malachite  
100% Trevira®  
800 gr/ml H150 cm



DEHORS GRIMAUD  
AD9011  
002 Malachite  
100% Trevira®  
800 gr/ml H150 cm



DEHORS GRIMAUD  
AD9011  
003 Indigo  
100% Trevira®  
800 gr/ml H150 cm



DEHORS GRIMAUD  
AD9011  
004 Ginger  
100% Trevira®  
800 gr/ml H150 cm



DEHORS ST RAPHAEL  
AD9017  
001 White  
70% Trevira®  
30% Poliestere  
785 gr/ml H150 cm

OUTDOOR FABRIC SELECTION FOR THE COLLECTIONS  
HERITAGE & CAMBRIDGE



DEHORS MALIBÙ  
AD9009  
001 Absolute White  
100% Polypropilene  
600 gr/ml H140 cm



DEHORS MALIBÙ  
AD9009  
002 Biancore  
100% Polypropilene  
600 gr/ml H140 cm



DEHORS MALIBÙ  
AD9009  
003 Zen  
100% Polypropilene  
600 gr/ml H140 cm



DEHORS ANTIBES  
AD9010  
002 Zen  
100% Polypropilene  
370 gr/ml H135 cm



DEHORS ANTIBES  
AD9010  
004 Aqua  
100% Polypropilene  
370 gr/ml H135 cm



DEHORS EZE  
AD9020  
001 White  
59% Trevira®  
41% Poliestere  
1180 gr/ml H140 cm



DEHORS EZE  
AD9020  
010 White - Kasha  
59% Trevira®  
41% Poliestere  
1180 gr/ml H140 cm



DEHORS EZE  
AD9020  
002 Kasha  
59% Trevira®  
41% Poliestere  
1180 gr/ml H140 cm



DEHORS EZE  
AD9020  
012 Kasha - Spago  
59% Trevira®  
41% Poliestere  
1180 gr/ml H140 cm



DEHORS EZE  
AD9020  
011 Kasha - Malachite  
59% Trevira®  
41% Poliestere  
1180 gr/ml H140 cm



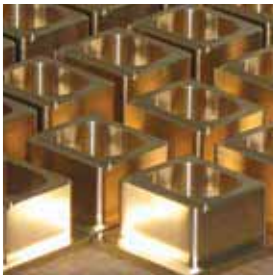
DEHORS ST RAPHAEL  
AD9017  
002 Kasha  
70% Trevira®  
30% Poliestere  
785 gr/ml H150 cm



CASCET & FABRIC SWATCHES FOR HERITAGE COLLECTION



MEDALLIONS & BRASS FINISHING



BRASS FEET:  
Brass feet in brass cut from the bar by CNC processing. Finish Gold polished including transparent vernish for outdoor protection.



ARM  
MEDALLIONS  
ø 22 mm



01  
Gold  
Polished Finish



02  
Cabochon  
of White  
Australian Mother  
of Pearl



03  
Custom Made Logo



01  
Gold  
Polished Finish

FINISHING

SLING FOR SEAT AND BACK  
Lugano, Sahara, Nautilus, Quadro, Cube Collections

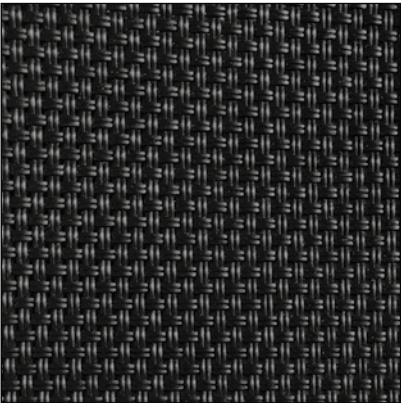
100% PLASTIFIED POLIESTERE FIBER



T13  
Taupe  
  
Lugano  
Sahara  
Nautilus  
Quadro



T14  
White/Grey  
  
Lugano  
Sahara



T15  
Anthracite  
  
Lugano  
Sahara  
Quadro



POWDERCOATED FRAME FOR CUBE COLLECTION

P31  
Textured Anthrazite  
Powder coating of all components in stainless steel

ENEACOLOURS

100% SOLUTION-DYED POLIPROPILENE



Anthracite



Nordic Green



Bordeaux



Rose



Gold



Ocher



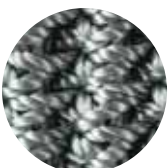
Ice Blue



Orange



Navy Blue



Silver



Copper



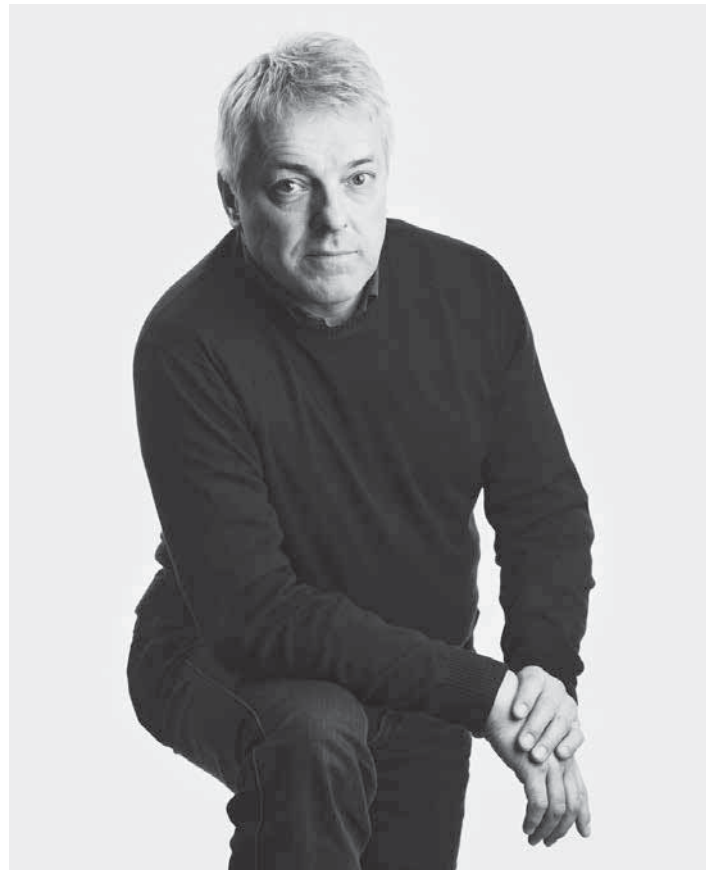
Turquoise





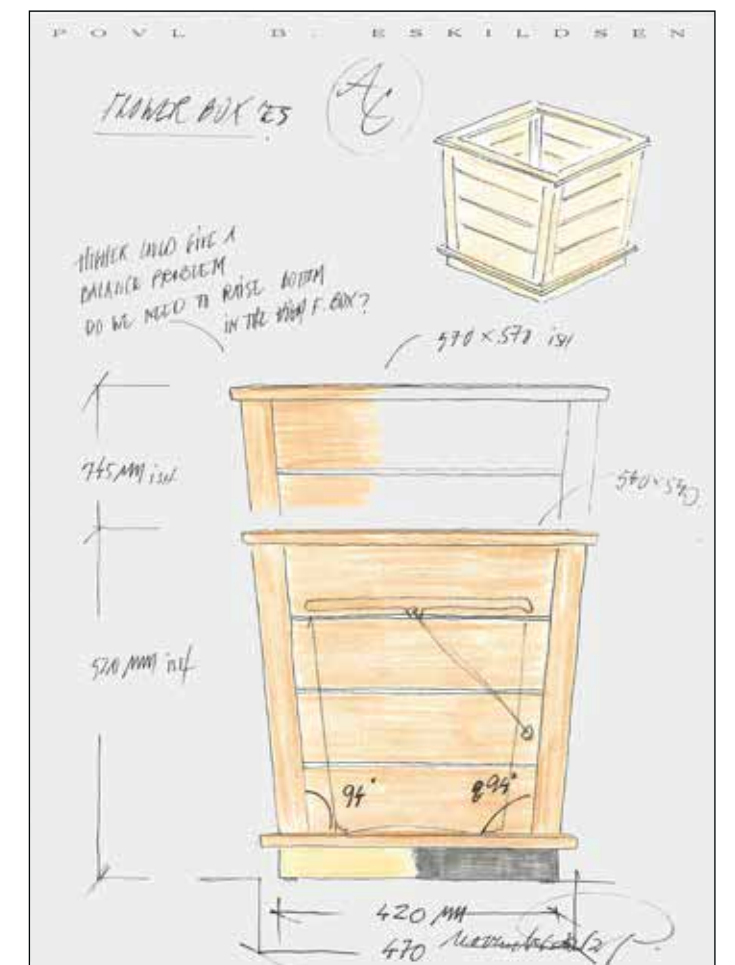


# THE ARCHITECT Povl B. Eskildsen



Architect Povl Bjerregaard Eskildsen, graduated from the Architect School in Aarhus Denmark in 1986, with a master degree in Furniture based on the Danish Furniture Design tradition. The Designer achieved understanding for wood and constructions, from the family's furniture factory, and now holds more than 50 years experience with teak wood, and has now designed outdoor furniture for more than 30 years. The designer believes that good design has to be pleasing to the eye, but this always combined with comfort and function.

Prefers to work with noble materials which will last for decades, e.g. teak wood and stainless steel, we have to be restrainable, our products need to last longer both in quality and style, this in mind though, new **products have to reflect our time and the life style wich keeps evolving**, and this I like to do with a clea modern classic touch. With the climate issues, we have to nurse our home life, and this with products wich can bring the dreams to our own back yard.







## STANDART TERMS OF SALE ARCO OUTDOOR

### 1) Adjournment of the standart terms of sale and update of Arcos' Products.

1.1 In any moment and without any previous notice Arco may adjourn its conditions of sale, the price of its products (the "Products"), giving the relevant notice in writing by sending the new standart terms of sale which shall automatically replace those previously in force after 30 days from the date of receipt by their recipient.

1.2 Arco reserves also the right to make any technological and esthetic improvement to its Products, including modifications to the dimensions and materials, as well as to cease the production of one or more Products.

### 2) Orders and changes.

2.1 Any order concerning one or more Arco's Products shall become effective and binding upon the receipt by Arco of the relevan offer countersigned by the Client for acceptance (the "Order").

2.2 The Client may ask in writing to Arco any modification to the Order to change item, finishing and coating. Should such requests be received by Arco after 5 days form the date of effectiveness of the Order, Arco shall reserve the right to accept them only provided that the costs of the materials initially requested and already employed in the production cycle and eventually unused are borne by the Client.

### 3) Selling price

The selling price specified in the price list in comprehensive of delivery to the street level and of standart packaging in cardboard, while for special packaging (including those in wooden crates) agreed in writing the cost and expenses will be entirely borne by the Client.

### 4) Property of Products.

Pursuant to the Articles 1523 and following of the Italian Civil Code, Arco shall be entitled of the ownership of the delivered goods until full payment of the agreed price and of any ancillary expenses and costs in accordance with the agreement and these standart terms of sale.

### 5) Delivery.

5.1 The Products will be delivered ex works, unless otherwise agreed in writing.

5.2 If the delivery is agreed to the warehouse of the distributor or to the end customer, the delivery shall be made at street level, without assembly and without wasting of the packaging, unless otherwise agreed in writing.

5.3 The deadlines for the delivery specified in the Order shall be deemed non essential any they represent the best forecast of the date of delivery (in the case of delivery ex works) or shipping (in the other cases) of the Products. Arco reserves the right to perform the Order also with partial deliveries.

5.4 The Client shall have the right to terminate the Order for delay in the delivery of the purchased goods if the delay exceeds 60 days from the date of delivery specified in the Order.

5.5 Arco shall not be liable for delays in delivery due to force majeure or fortuitous event.

5.6 If the Client delays in accepting the delivery of one or more goods encompassed in the Order, it shall pay to Arco the storage expenses, agreed in Euro 0,50 per cubic meter for each day of delay, in addition to the price agreed in the Order and to the interests accrued, pursuant to the following article.

5.7 If the delay in accepting the delivry exceeds 6' days, Arco shall have the right to terminate the Order by written notice to the Client. In this case Arco, in addition the the above, shall be entitled to receive the payment, by way of penalty, of an ammount equal to 5% of the agreed price, in addition to compensation for the further damages.

### 6) Payments.

6.1 All payments shall be made within the terms and the conditions set forth in the Order only to Arco Marketing S.r.l., with corporate offices in Caselle di Sommacampagna (Italy), wich, for all legal purposes, shall be considered the place of the performance of the Order.

6.2 In the case of lack or delayed payment, Arco shall be entitled, as its choice: (i) to the immediate payment of the balance for the forfeiture of the Client of the benefit of the term, and to complete the supply in relation to which the breach of contract has occurred, and any subsequent delivery to the same Client, only upon receipt of the whole consideration; or alternatively (ii) to terminate the Order. In any case, any delay in the payment shall entitle Arco to interests on delayed payment pursuant to Legislative Decrete n° 231/2002 and subsequent amendments, in addition to full reimbursement by the Client of the costs of collection of the credit,

of banking rights and any other expense (including legal costs) relating to the collection of late payment of just even connected to te same.

### 7) Quality of Products.

7.1 Arco warrants the quality of its Products and undertakes to make, at its factory in Verona Interporto (Italy) any repairs and/or replacements of parts in case of manufacturing defects.

7.2 Repairs and replacements due to standard wear and tear or to lack of periodic checks or maintenance of the Products, or to use with turn to be improper or negligent or not compliant with the requirements of the product sheet are excluded from the warrenty.

7.3 Furthermore, any warranty for wrong installation or maintenance or repairs made by unauthorized third parties or with damaged or not original spare parts is excluded.

7.4 In case of effectiveness of the warranty pursuant to the above, the relevant Product must be shipped by the Client at the port indicated by Arco and shall be sent back by Arco in carriage free.

### 8) Complaints

8.1 At the time of delivery of Products, the Client must check that the parcels are intact and that the quantity corresponds to that shown on the accompanying documents referred to the Order. In the case of any inconsistency, the Client must not its reserves in the deliver's documents, otherwise the Products shall be deemed delivered intact and in the same quantities agreed in the Order.

8.2 Any complaint relating to a Product must be sent in writing by and no later than 8 days from the receipt of the same Product, under penalty of forfeiture of the relevant right. Under the penalty of inefficacy of the complaint, the defect must be detailed and documented through digital photos highlighting the alleged defect.

8.3 For damages due to the transportation, the carrier's insurance shall respond only in the event that the damages are detailed and timely raised. In particular: (i) for damages immediately detectable by the Client, the reserve must be noted on the delivery documents a the presence of the carrier; (ii) damages not immediately detectable must be noticed in writing to Arco and to the carrier in copy by and no later that 10 days from the receipt of goods, in accordance with the procedures referred to in Article 8.2 above.

8.4 Any returns must be authorized in advance in writing by Arco and returned in carriage free, duly packed.

8.5 In case of identified defect the a Product, the replacement of the same at care and expense of Arco schall be the only remedy available to the Client.

### 9) Miscellaneas

9.1 Sales of Arco's Products are regulated by these standart terms of sales, wich integrate the terms and conditions from time to time agreed in the individual Orders. In the event of any discrepancy between on one more provisions of these standart terms of sale and an Order, the terms and conditions set forth in the latter shall prevail.

9.2 Once entered into, any Order shall cause any prior agreements and understandings reached in any form with the Client to be ineffective and not opposable to the latter, save as otherwise agreed in writing.

9.3 Any Order may be modified only by way of a written instrument, undersigned by Arco and the Client.

9.4 Any communication relating to any Order shall be made in writing to the addresses of Arco and the Client as shown in Order, without prejudice to the obligation of each party to notice the other party in writing of any modification of its address and with the specification that at the same address both Arco and the Customer elect their domiciles in connection with any notification, including the any service of process.

9.5 Personal and professional data of the Clients required for the execution with applicable provisions on personal data protection, of and in particular with Legislative Decree No 196/2003 and subsequent amendments.

### 10) Applicable law and Jurisdiction.

10.1 The Orders and any aspect referred to their negotiation and performance shall be regulated by Italian law.

10.2 Any disputes between Arco and the Client concerning an Order or in any case arisen from the same shall be submitted to the exclusive jurisdiction and venue of the Court of Verona, Italy.





FINE OUTDOOR FURNITURE IN PREMIUM TEAK

ARCO OUTDOOR SRL  
Via dell'Artigianato, 36  
37066 Caselle di Sommacampagna (Vr) ITALY  
T. +39 045 8626158  
[contact@arcoarredi.com](mailto:contact@arcoarredi.com)  
[www.arcoarredi.com](http://www.arcoarredi.com)







